

## MD004004

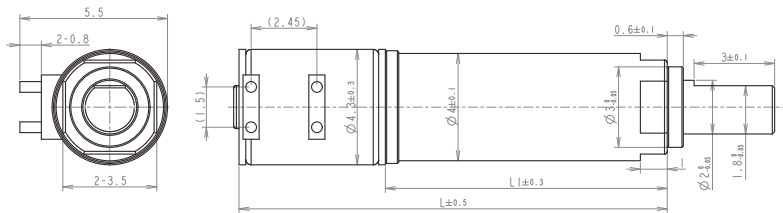
### 齿轮箱规格 Gearbox Specifications

外径	Outer diameter	4mm	轴承	Bearing	含油轴承 Porous bearing
材质	Material	五金 Metal	轴向窜动	Axial endplay	≤0.3mm
旋转方向	Direction of rotation	cw & ccw	输出轴径向负载	Radial loading on output shaft	≤0.3N
齿轮箱回程差	Gear backlash	≤3°	工作温度	Operating temperature range	-20 ~ +85°C

### 齿轮级数 Gearbox Stages

		1	2	3	4
减速比	Reduction ratio	5	25	125	625
最大容许扭力 (gf.cm)	Max rated torque of gearbox (gf.cm)	70	70	70	70
瞬间容许力矩 (gf.cm)	Instant torque of gearbox (gf.cm)	200	200	200	200
齿轮箱效率 (%)	Gearbox efficiency (%)	85	73	65	58
长度 (mm)	Gearbox length L1 (mm)	6.6	8.1	9.6	11.1

### 技术插图 | Technical Drawing



### 马达规格参数 Motor Specifications

马达(可选择) Motor type (optional)	步进电机 Stepper motor	输入速度 Input speed	≤10000rpm
电压(可选择) Voltage (optional)	1.5-5V	电流 Current	50mA max

型号 Model	Rated Speed 额定转速	Max Rated Torque 额定容许力矩	Max Instant Torque 瞬间容许力矩	Reduction Ratio 减速比	Gearbox Length 减速箱长 L1	Overall Length 总长 L
	rpm	gf.cm	gf.cm		mm	mm
MD004004-5	300.0	70	200	5	6.6	18.6
MD004004-25	60.0	70	200	25	8.1	20.1
MD004004-125	12.0	70	200	125	9.6	21.6
MD004004-625	2.4	70	200	625	11.1	23.1

注：可根据客户要求定制 Please contact us for customized products